

APP CRS **259°**
 Rwy Idg **13793**
 TDZE **5355**
 Apt Elev **5355**

RNAV (RNP) Y RWY 26

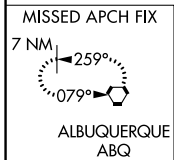
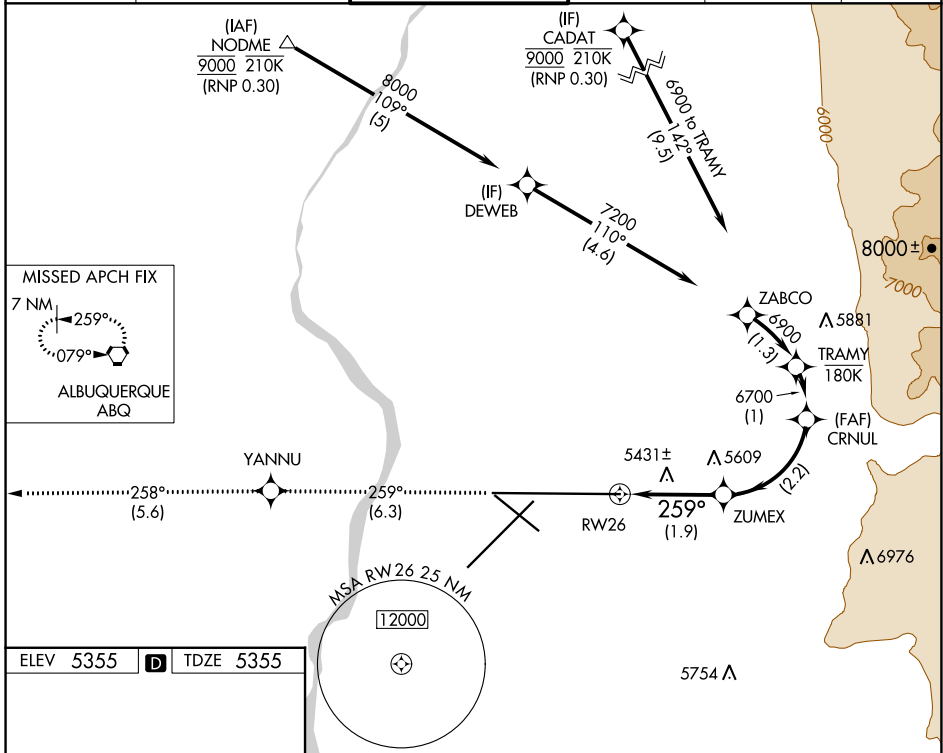
ALBUQUERQUE INTL SUNPORT (ABQ)

RNP AR APCH, RF required.

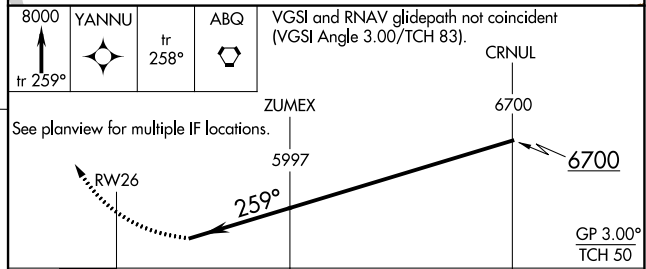
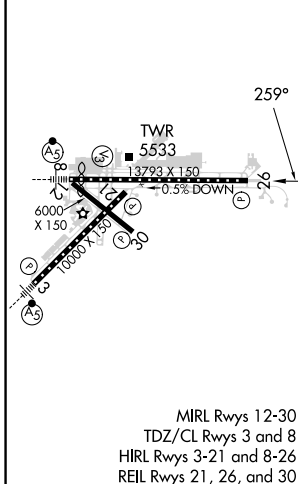
ASR For uncompensated Baro-VNAV systems, procedure NA below -12°C or above 48°C.

MISSED APPROACH: Climb to 8000 on track 259° to YANNU and on track 258° to ABQ VORTAC and hold.

D-ATIS 118.0 257.7	ALBUQUERQUE APP CON 123.9 354.1	ALBUQUERQUE TOWER 120.3 351.9	GND CON 121.9 348.6	CLNC DEL 119.2 259.3	CPDLC
------------------------------	---	---	-------------------------------	--------------------------------	-------



ELEV 5355 **D** TDZE 5355



CATEGORY	A	B	C	D
RNP 0.15 DA	5728-1¼ 373 (400-1¼)			

AUTHORIZATION REQUIRED

SW-1, 03 OCT 2024 to 31 OCT 2024

SW-1, 03 OCT 2024 to 31 OCT 2024