

# HI-TACAN RWY 8

VORTAC ABQ 113.2 Chan 79	APCH CRS 077	Rwy ldg 12,793	TDZE 5320
		Arprt Elev 5355	

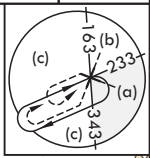
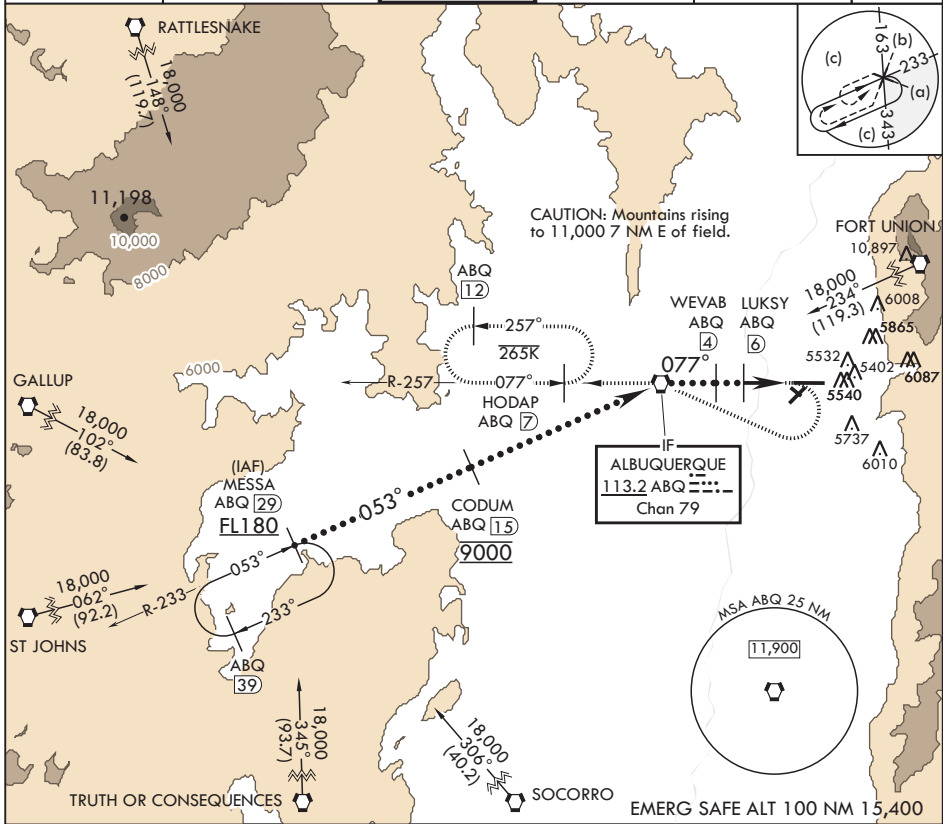
JAL-12 (USAF)

ALBUQUERQUE INTL SUNPORT (KABQ)

⚠ \* When ALS inop, increase CAT CDE RVR to 55, vis to 1 1/8 miles.  
 \*\* Circling NA for CAT E SE of Rwy 3-21 and NE of Rwy 12-30.  
 When local altimeter is not received, procedure NA.

MALSRS MISSED APPROACH: Climb to 5800 then climbing right turn to 8000 direct ABQ VORTAC R-257 to HODAP/ABQ 7 DME and hold.

D ATIS 118.0 257.7	APP CON/DEP CON 123.9 253.5	TOWER 120.3 351.9	GND CON 121.9 348.6	CLNC DEL 119.2 259.3	ASR
-----------------------	--------------------------------	----------------------	------------------------	-------------------------	-----



SW-1, 03 OCT 2024 to 31 OCT 2024

SW-1, 03 OCT 2024 to 31 OCT 2024

MESSA R-233 (29)	CODUM (15)	(IF) ABQ VORTAC	WEVAB (4)	LUKSY (6)	EYECO (9)	ELEV 5355	TDZE 5320
FL 180 → 053° → 9000 → 077° → 8000 → 6800 → 6600						Rwy 8 ldg 12,793'	
3.08° TCH 54						077° 3.8NM from FAF	
3 NM → .8						TWR 5533	
						0.3% UP → 13,793 x 150	
						5458	
						5354	
						REIL Rws 21, 26, 30	
						HIRL Rws 3-21, 8-26	
						MIRL Rwy 12-30	
						TDZL/CL Rws 3, 8	

# HI-TACAN RWY 8