

# ADYOS THREE DEPARTURE (RNAV)

AL-12 (FAA)

SW-1, 08 AUG 2024 to 05 SEP 2024

**DEPARTURE ROUTE DESCRIPTION**

**TAKEOFF RUNWAY 21:** Climb heading 214° to 5860, then direct ASTAH, cross ASTAH at or below 9000, then on depicted route to ADYOS. Thence. . . .

**TAKEOFF RUNWAY 26:** Climb heading 259° to 5860, then direct ABQ VORTAC, then on track 262° to ADYOS. Thence. . . .

. . . (transition). Maintain FL200, expect filed altitude ten minutes after departure.

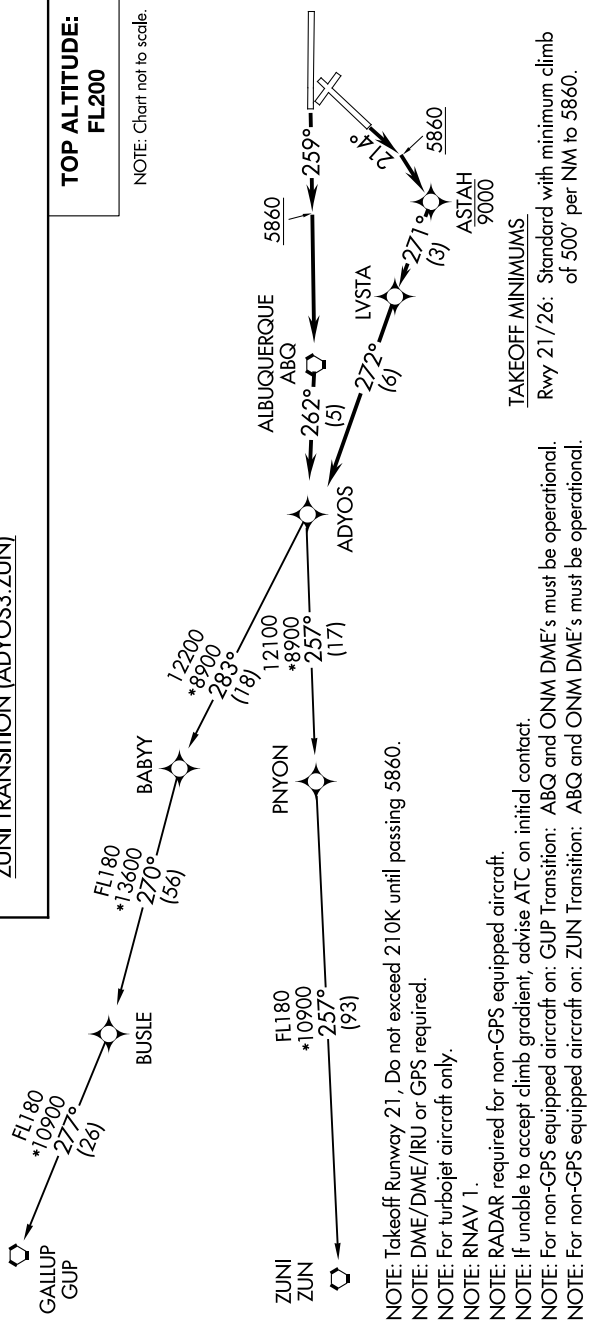
GALLUP TRANSITION (ADYOS3.GUP)

ZUNI TRANSITION (ADYOS3.ZUN)

**TOP ALTITUDE:**  
**FL200**

NOTE: Chart not to scale.

D-ATIS 118.0 257.7  
 CLNC DEL 119.2 259.3  
 CPDC 121.9 348.6  
 GND CON 120.3 351.9  
 ALBUQUERQUE TOWER 127.4 253.5  
 ALBUQUERQUE DEP CON



NOTE: Takeoff Runway 21, Do not exceed 210K until passing 5860.  
 NOTE: DME/DME/IRU or GPS required.  
 NOTE: For turbojet aircraft only.  
 NOTE: RNAV 1.  
 NOTE: RADAR required for non-GPS equipped aircraft.  
 NOTE: If unable to accept climb gradient, advise ATC on initial contact.  
 NOTE: For non-GPS equipped aircraft on: GUP Transition: ABQ and ONM DME's must be operational.  
 NOTE: For non-GPS equipped aircraft on: ZUN Transition: ABQ and ONM DME's must be operational.

**TAKEOFF MINIMUMS**  
 Rwy 21/26: Standard with minimum climb of 500' per NM to 5860.

SW-1, 08 AUG 2024 to 05 SEP 2024