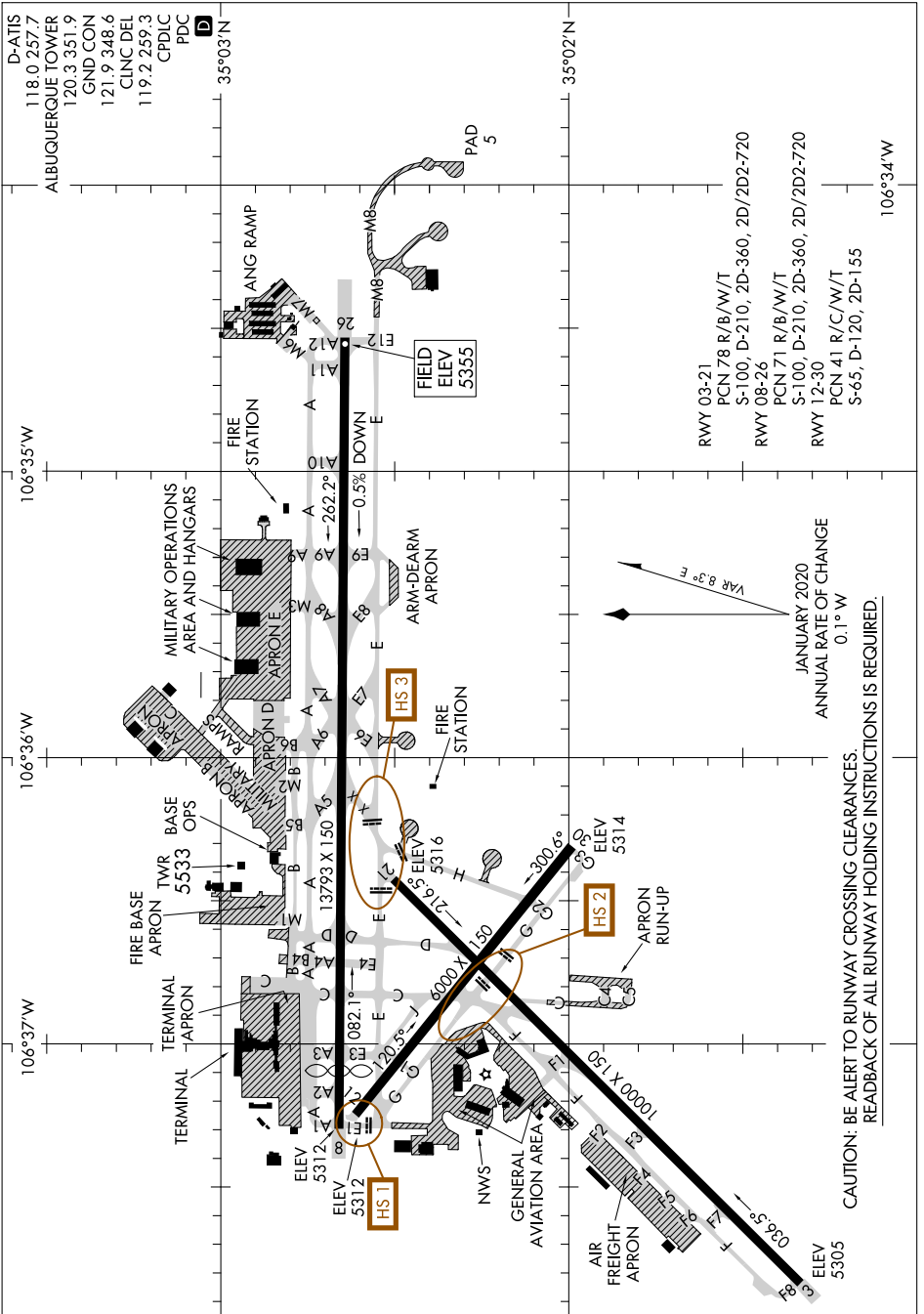


# AIRPORT DIAGRAM

AL-12 (FAA)

ALBUQUERQUE INTL SUNPORT (ABQ)  
ALBUQUERQUE, NEW MEXICO



Runway	Dimensions	PCN	Surface
RWY 03-21	1000' x 50'	78	R/B/W/T
RWY 12-30	1000' x 50'	71	R/B/W/T
RWY 26-36	13793' x 150'	100	D-210, 2D-360, 2D/2D2-720
RWY 36-65	1000' x 50'	65	D-120, 2D-155

ANNUAL RATE OF CHANGE  
0.1° W  
CAUTION: BE ALERT TO RUNWAY CROSSING CLEARANCES.  
READBACK OF ALL RUNWAY HOLDING INSTRUCTIONS IS REQUIRED.

SW-1, 03 OCT 2024 to 31 OCT 2024

SW-1, 03 OCT 2024 to 31 OCT 2024

# AIRPORT DIAGRAM

ALBUQUERQUE, NEW MEXICO  
ALBUQUERQUE INTL SUNPORT (ABQ)