

APCH CRS 218°	Rwy Idg TDZE Arprt Elev	10,578 4083 4093
------------------	-------------------------------	------------------------

-(USAF)

HOLLOMAN AFB (KHMN)

RNP APCH-GPS	ALSF-1	MISSED APPROACH: Climb to 5000 then climbing right turn to 7000 direct JOBAM and hold.
<p>▲ * When ALS inop, increase vis to 1 1/4 miles. ** When ALS inop, increase CAT AB vis to 1 mile; CAT CDE vis to 1 3/8 miles.</p>		

ATIS★ 273.5	ALBUQUERQUE CENTER 132.65 257.6	APP CON 120.6 269.225	TOWER★ 119.3 254.4	GND CON 127.05 275.8	CLNC DEL 126.7 289.4
----------------	------------------------------------	--------------------------	-----------------------	-------------------------	-------------------------

*** When Circling to Rwy 25 at Night, operational VGSI required, remain on or above VGSI glidepath until threshold. Circling Visibility Reduction by Helicopters NA.

Visibility reduction by helicopters NA.

INBOUND WEST: Airspace West Restricted. Expect routing via CORONA.

Unlit terrain 4083' MSL 200' from threshold, 400' right of course.

Unlit terrain 4083' MSL 200' from threshold, 72' right of course.

For uncompensated Baro-VNAV systems, procedure NA below -23°C (-9°F) or above 54°C (129°F). Average Cold Temperature based on standard -30.00°C ISA deviation.

(IAF) KASTL 11,000

COPOR 10,200

DACAG 10,000

(IF) LEVAK (3)

DANLE (2,6)

(FAF) CIMVU (3,5)

JOGDI 4255

RW22 4298

5000

7000

9000

9695

MSA RW22 2.5 NM 11,000

CAUTION: High terrain to the East within 15 NM.

CAUTION: Circling to Rwy 4 NA at night.

CAUTION: When Rwy 16 VGSI inop, circling to Rwy 16 NA at night.

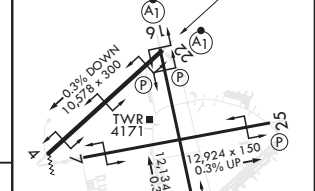
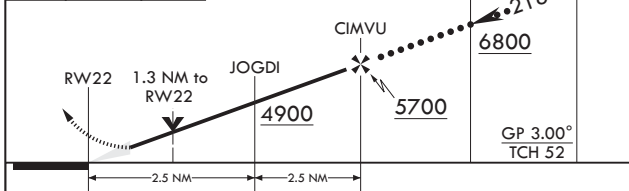
SW-1, 03 OCT 2024 to 31 OCT 2024

SW-1, 03 OCT 2024 to 31 OCT 2024

NOT FOR CIVIL USE

EMERG SAFE ALT 100 NM 14,200

5000	7000	JOBAM	LEVAK	ELEV 4093	TDZE 4083
------	------	-------	-------	-----------	-----------



CATEGORY	A	B	C	D	E
LNAV/VNAV DA*	4507-3/4		424	(500-3/4)	
LNAV MDA**	4540-1/2	457 (500-1/2)	4540-7/8	457	(500-7/8)
▲ CIRCLING***	4620-1	527 (600-1)	4660-1 1/2 567 (600-1 1/2)	4740-2 647 (700-2)	4780-2 1/2 687 (700-2 1/2)

HIRL all Rwys
REIL Rwy 22