

WAAS CH 49004 W18A	APP CRS 175°	Rwy Idg 6610 TDZE 166 Apt Elev 166
--	------------------------	---

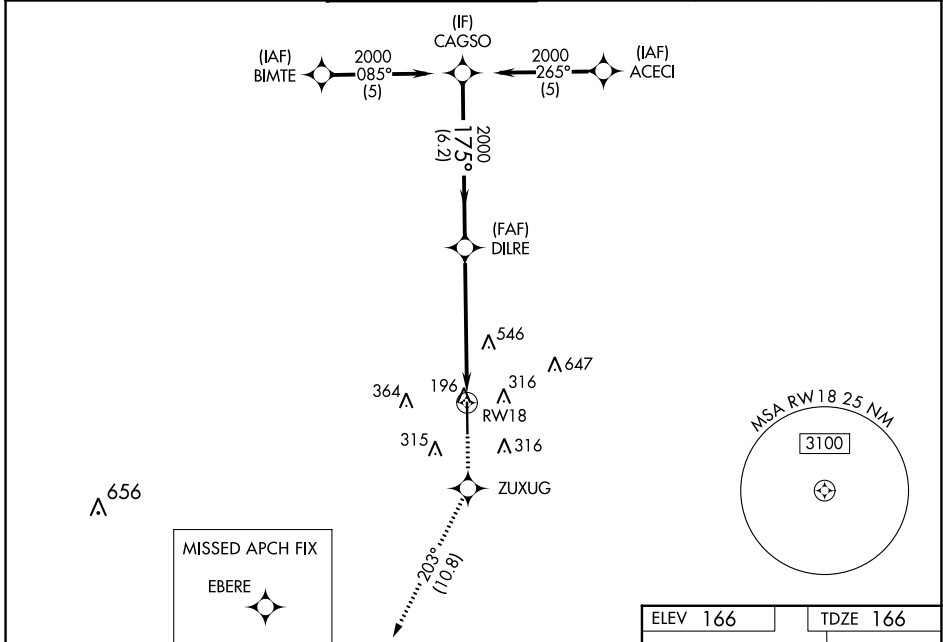
RNAV (GPS) RWY 18

HOUSTON EXEC (TME)

⚠ Baro-VNAV NA when using David Wayne Hooks Mem'l altimeter setting. For uncompensated Baro-VNAV systems, LNAV/VNAV NA below -15°C (5°F) or above 48°C (118°F). DME/DME RNP-0.3 NA. VDP NA when using David Wayne Hooks Mem'l altimeter setting. Helicopter visibility reduction below ¼ SM NA. When local altimeter setting not received, use David Wayne Hooks Mem'l altimeter setting and increase all DA 57 feet and all MDA 60 feet; increase LNAV/VNAV all Cats and LNAV Cat C/D visibility ½ mile, and Circling Cat C/D visibility ¼ mile.

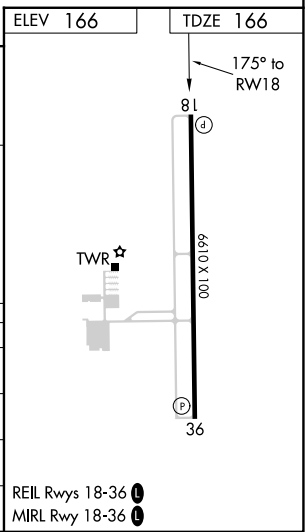
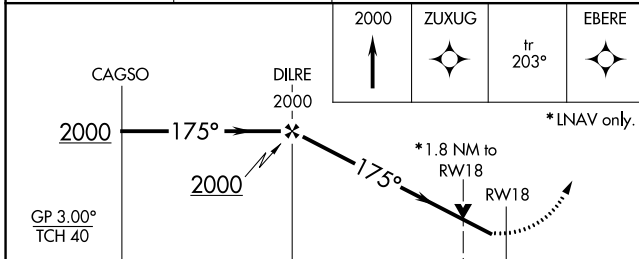
MISSED APPROACH: Climb to 2000 direct ZUXUG and on track 203° to EBERE and hold.

ATIS 119.525	HOUSTON APP CON 123.8 257.7	EXECUTIVE TOWER ★ 126.975 (CTAF) 0	GND CON 132.075	CLNC DEL 132.075	UNICOM 122.975
------------------------	---------------------------------------	---	---------------------------	----------------------------	--------------------------



SC-5, 05 SEP 2024 to 03 OCT 2024

SC-5, 05 SEP 2024 to 03 OCT 2024



CATEGORY	A	B	C	D
LPV DA	416-1 250 (300-1)			
LNAV/VNAV DA	708-2 542 (600-2)			
LNAV MDA	780-1 614 (700-1)	780-1¾ 614 (700-1¾)		
CIRCLING	820-1 654 (700-1)	860-2 694 (700-2)	1000-2¾ 834 (900-2¾)	

REIL Rwy 18-36 **0**
MIRL Rwy 18-36 **0**