

CRID ONE DEPARTURE

AL-10328 (FAA)

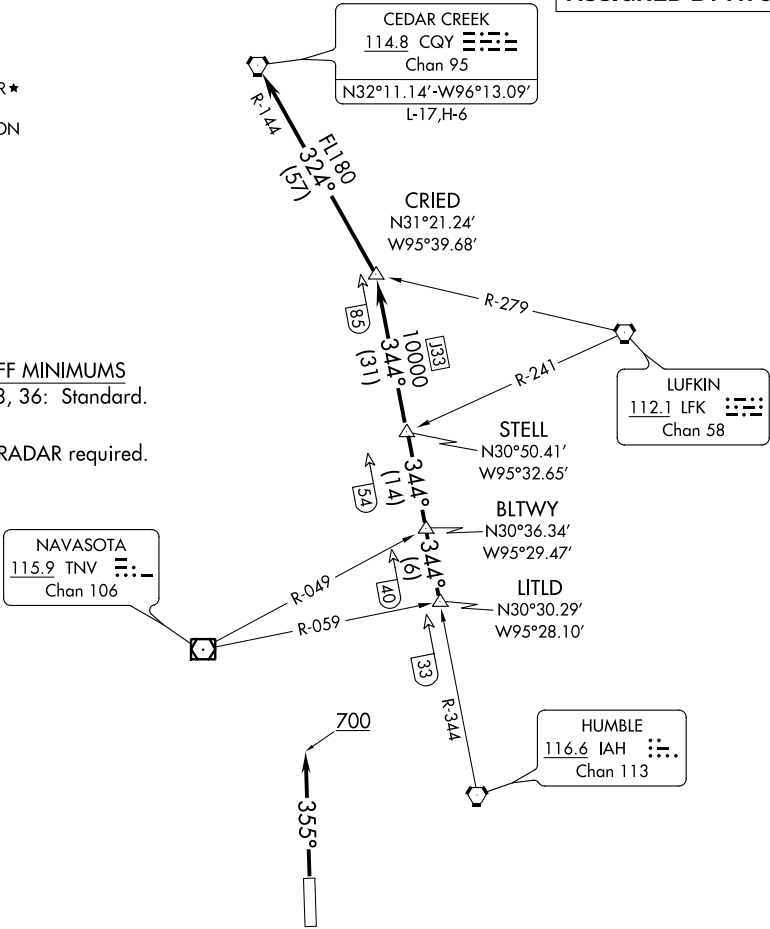
HOUSTON EXEC (TME)
HOUSTON, TEXAS

ATIS
119.525
CLNC DEL
132.075
GND CON
132.075
EXECUTIVE TOWER ★
126.975 (CTAF)
HOUSTON DEP CON
123.8 257.7

TOP ALTITUDE:
ASSIGNED BY ATC

TAKEOFF MINIMUMS
Rwys 18, 36: Standard.

NOTE: RADAR required.



NOTE: Chart not to scale.



DEPARTURE ROUTE DESCRIPTION

TAKEOFF RUNWAY 18: When entering controlled airspace, climb on assigned heading for RADAR vectors to LITLD INT. Maintain ATC assigned altitude. Expect filed altitude 10 minutes after departure, thence. . . .

TAKEOFF RUNWAY 36: Climb on heading 355° to 700 before turning. When entering controlled airspace, climb on assigned heading for RADAR vectors to LITLD INT. Maintain ATC assigned altitude. Expect filed altitude 10 minutes after departure, thence. . . .

. . . . on IAH R-344 to STELL INT, then on IAH R-344 to CRID INT, then left turn on CQY R-144 to CQY VORTAC.

CRID ONE DEPARTURE