

MARYSVILLE, KANSAS

AL-6566 (FAA)

23054

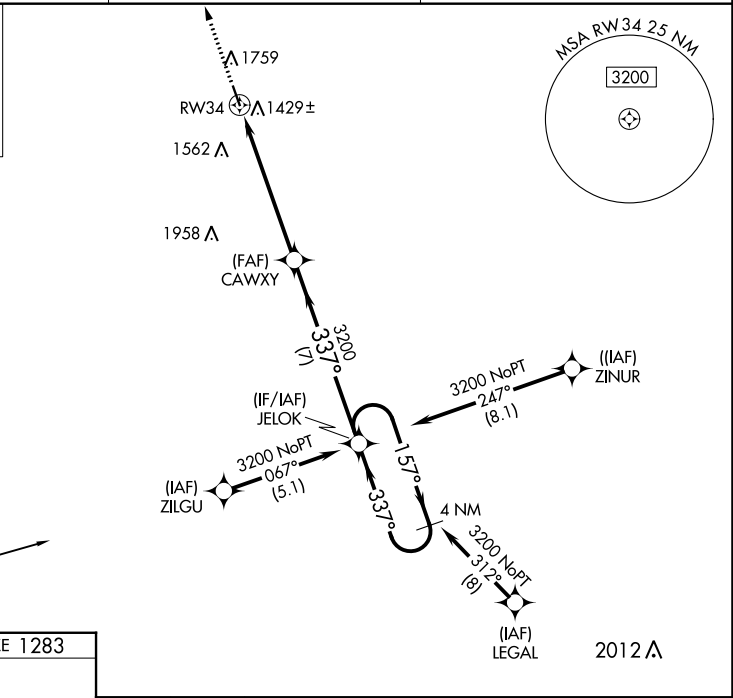
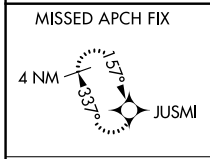
WAAS CH 82420 W34A	APP CRS 337°	Rwy Idg TDZE Apt Elev	4200 1283 1283
--	------------------------	-----------------------------	---

RNAV (GPS) RWY 34

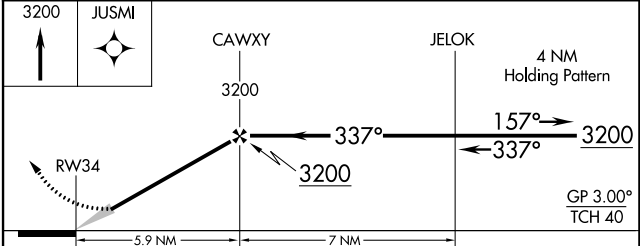
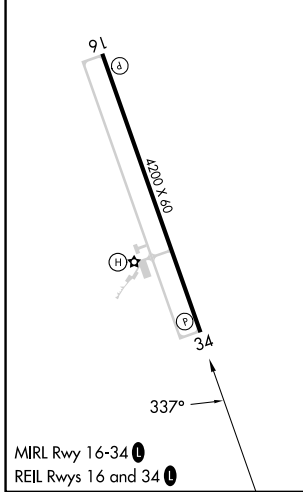
MARYSVILLE MUNI (MYZ)

RNP APCH.	MISSED APPROACH: Climb to 3200 direct JUSMI and hold.
<p>When local altimeter setting not received, use Beatrice altimeter setting. Baro-VNAV NA when using Beatrice altimeter setting.</p>	

AWOS-3PT 118.675	KANSAS CITY CENTER 123.8 343.7	UNICOM 122.8 (CTAF)
----------------------------	--	-------------------------------



ELEV 1283	TDZE 1283
-----------	-----------



CATEGORY	A	B	C	D
LPV DA	1629-1 $\frac{1}{8}$		346 (400-1 $\frac{1}{8}$)	NA
LNAV/VNAV DA	1674-1 $\frac{3}{8}$		391 (400-1 $\frac{3}{8}$)	NA
LNAV MDA	1900-1	617 (700-1)	1900-1 $\frac{3}{4}$ 617 (700-1 $\frac{3}{4}$)	NA
CIRCLING	2180-1 $\frac{1}{4}$	897 (900-1 $\frac{1}{4}$)	2180-2 $\frac{3}{4}$ 897 (900-2 $\frac{3}{4}$)	NA

MARYSVILLE, KANSAS
Orig-C 25APR19

39°51'N-96°38'W

RNAV (GPS) RWY 34

NC-2, 05 SEP 2024 to 03 OCT 2024

NC-2, 05 SEP 2024 to 03 OCT 2024