

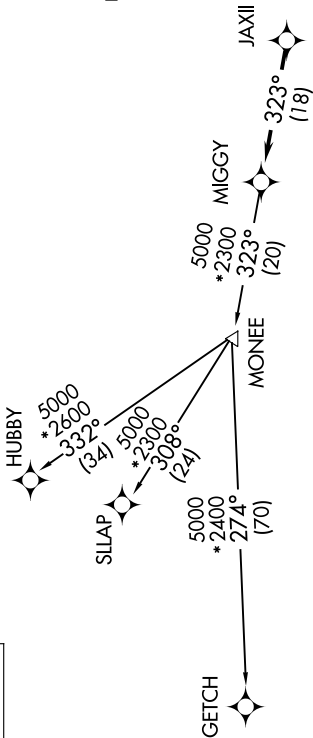
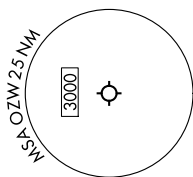
EC-1, 05 SEP 2024 to 03 OCT 2024

AWOS-3  
118.875  
CINC DEL  
121.725  
CTAF  
123.0  
DETROIT DEP CON  
132.35 284.0



**TOP ALTITUDE:  
ASSIGNED BY ATC**

RNAV 1 - DME/DME/IRU or GPS.  
RADAR required.



**TAKEOFF MINIMUMS:**  
Rwys 13, 31: Standard.

**NOTE:** Jet departures at/above 10000, maintain 280K until advised by ATC.  
**NOTE:** GETCH TRANSITION: For use by KMKE area arrivals only, or as assigned by ATC.

**DEPARTURE ROUTE DESCRIPTION**

**TAKEOFF RUNWAY 13:** Climb on heading 132° or as assigned by ATC, thence....  
**TAKEOFF RUNWAY 31:** Climb on heading 312° or as assigned by ATC, thence....

...for RADAR vectors to JAXII, then on track 323° to MIGGY, then on (transition).  
Maintain 17000 or as assigned by ATC, expect filed altitude 10 minutes after departure.

**GETCH TRANSITION (MIGGY3.GETCH):**  
**HUBBY TRANSITION (MIGGY3.HUBBY):**  
**SLLAP TRANSITION (MIGGY3.SLLAP):**

NOTE: Chart not to scale.

EC-1, 05 SEP 2024 to 03 OCT 2024