

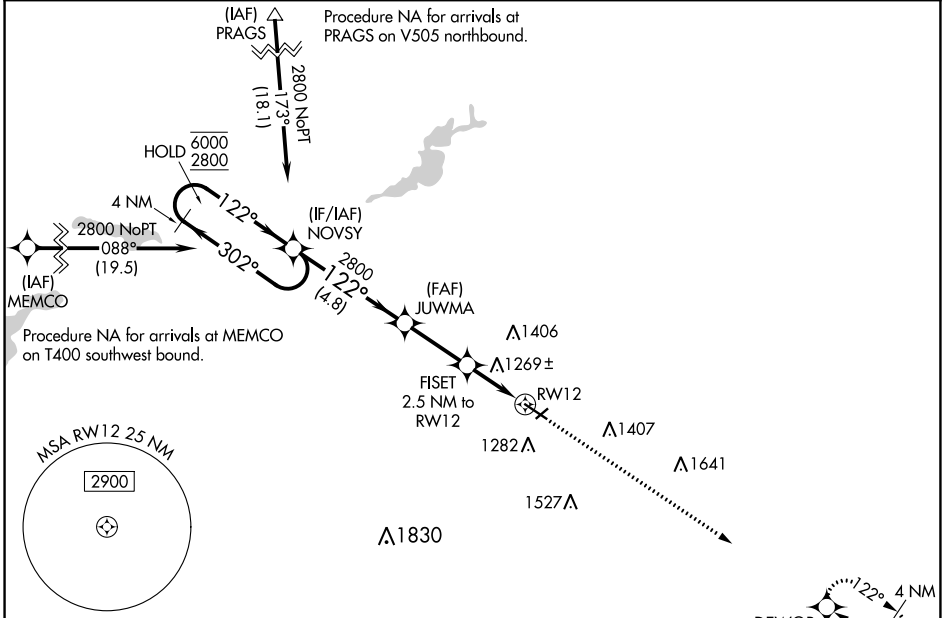
WAAS CH 82627 W12A	APP CRS 122°	Rwy Idg TDZE Apt Elev	5500 1127 1145
--	------------------------	-----------------------------	---

RNAV (GPS) RWY 12

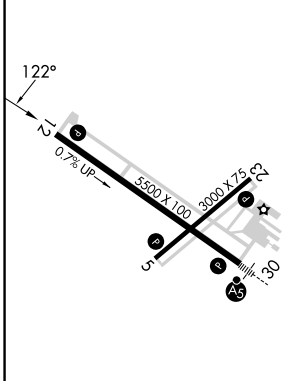
OWATONNA DEGNER RGNL (OWA)

RNP APCH - GPS.	MISSED APPROACH: Climb to 2900 direct DEWOR and hold.
<p>⚠ Rwy 12 helicopter visibility reduction below 3/4 SM NA. For uncompensated Baro-VNAV systems, LNAV/VNAV NA below -17°C or above 54°C.</p>	

AWOS-3 128.325	ROCHESTER APP CON * 119.8 251.125	UNICOM 122.7 (CTAF)
--------------------------	---	-------------------------------



ELEV 1145	TDZE 1127
-----------	-----------



	4 NM Holding Pattern	NOVSY	JUWMA	FASET 2.5 NM to RWY12	2900	DEWOR
	6000 ← 302°	2800 → 122°	122°	2800	1940	
	GP 3.00°					
	TCH 40					
		4.8 NM	2.7 NM	1.3 NM	1.2 NM	
CATEGORY	A	B	C	D		
LPV DA		1420-7/8	293 (300-7/8)			
LNAV/VNAV DA		1400-7/8	273 (300-7/8)			
LNAV MDA	1520-1	393 (400-1)	1520-1 1/8	393 (400-1 1/8)		
C CIRCLING	1640-1 495 (500-1)	1700-1 555 (600-1)	1720-1 1/2 575 (600-1 1/2)	1880-2 1/4 735 (800-2 1/4)		

MIRL Rwy 5-23
REIL Rwy 5, 12, and 23
HIRL Rwy 12-30

NC-1, 05 SEP 2024 to 03 OCT 2024

NC-1, 05 SEP 2024 to 03 OCT 2024