

SINTON, TEXAS

AL-5274 (FAA)

24137

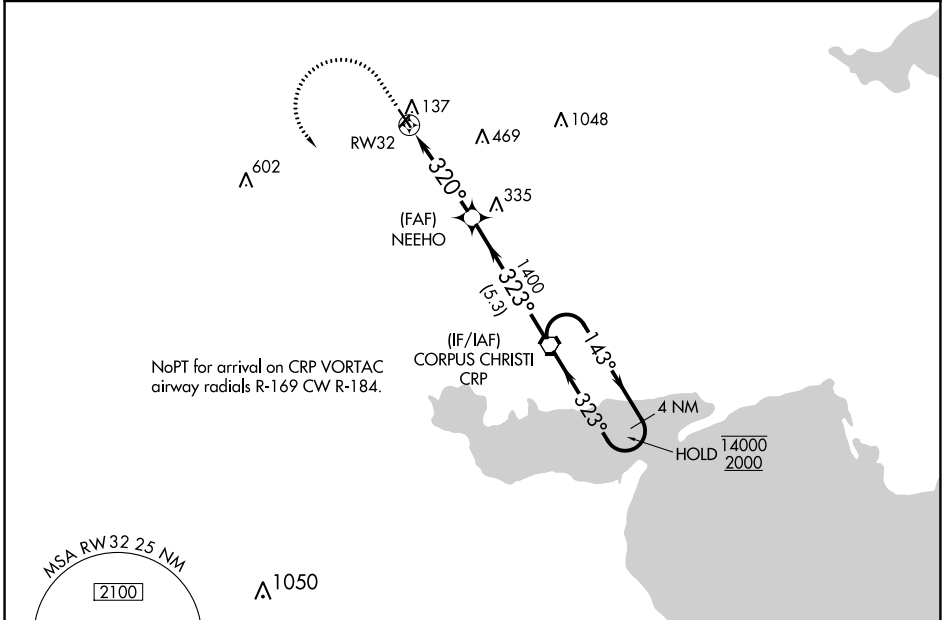
APP CRS	Rwy Idg	3923
320°	TDZE	48
	Apt Elev	48

RNAV (GPS) RWY 32

SINTON (T69)

RNP APCH.	MISSED APPROACH: Climb to 1000 then climbing left turn to 2000 direct CRP VORTAC and hold.
<p>T Procedure NA at night.</p> <p>A Rwy 32 helicopter visibility reduction below 1 SM NA.</p>	

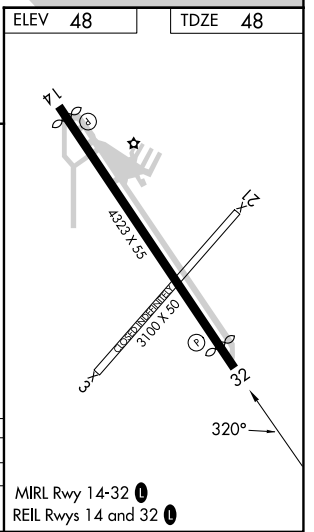
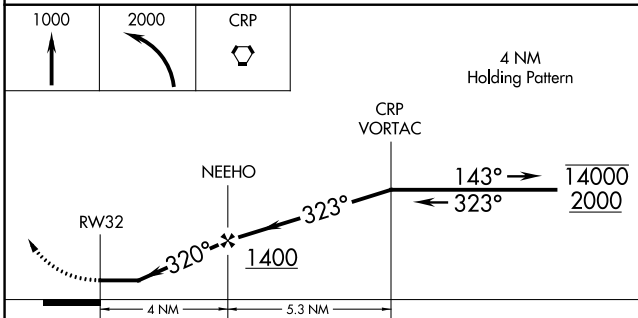
AWOS-3 118.25	CORPUS APP CON 120.9 348.725	UNICOM 122.8 (CTAF) 0
-------------------------	--	---------------------------------



SC-3, 05 SEP 2024 to 03 OCT 2024

SC-3, 05 SEP 2024 to 03 OCT 2024

ELEV 48	TDZE 48
----------------	----------------



CATEGORY	A	B	C	D
LNAV MDA	520-1	472 (500-1)		NA
CIRCLING	620-1 572 (600-1)	720-1 672 (700-1)		NA

SINTON, TEXAS
Orig-B 31DEC20

28°02' N-97°33' W

RNAV (GPS) RWY 32

SINTON (T69)