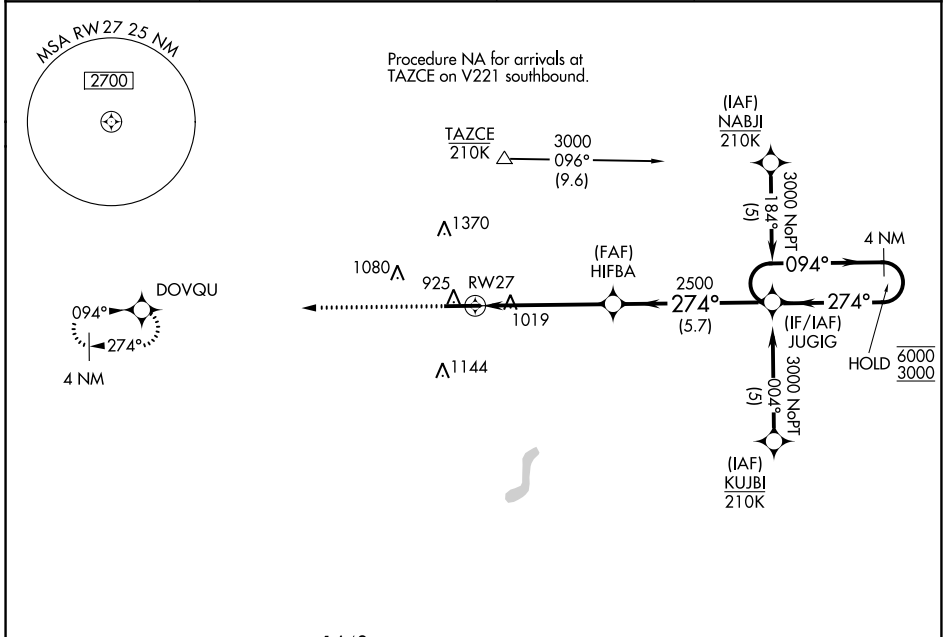


WAAS CH <b>86401</b> <b>W27A</b>	APP CRS <b>274°</b>	Rwy Idg <b>6355</b> TDZE <b>881</b> Apt Elev <b>881</b>
--	------------------------	---

# RNAV (GPS) RWY 27

DE KALB COUNTY (GWB)

RNP APCH - GPS.		MALSRL	MISSED APPROACH: Climb to 3000 direct DOVQU and hold.
For uncompensated Baro-VNAV systems, LNAV/VNAV NA below -16°C or above 54°C.			
AWOS-3P <b>124.15</b>	FORT WAYNE APP CON <b>127.2 284.6</b>	CLNC DEL <b>126.6</b>	UNICOM <b>123.0 (CTAF)</b>



ELEV 881	TDZE 881	1648		
	<p>3000 DOVQU</p> <p>JUGIG 4 NM Holding Pattern</p> <p>HIFBA 2500</p> <p>274°</p> <p>094° → 6000</p> <p>← 274° 3000</p> <p>GP 3.00° TCH 47</p> <p>1.2 NM to RWY 27</p> <p>RWY 27</p> <p>1.2 3.7 NM 5.7 NM</p>			
REIL Rwy 9 and 27	MIRL Rwy 9-27			
CATEGORY	A	B	C	D
LPV DA	1081-1/2 200 (200-1/2)			
LNAV/VNAV DA	1314-3/4 433 (500-3/4)			
LNAV MDA	1320-1/2 439 (500-1/2)	1320-3/4 439 (500-3/4)		
CIRCLING	1320-1 439 (500-1)	1560-1 679 (700-1)	1720-2 1/2 839 (900-2 1/2)	1720-2 3/4 839 (900-2 3/4)

EC-2, 31 OCT 2024 to 28 NOV 2024

EC-2, 31 OCT 2024 to 28 NOV 2024