

# TACAN RWY 6

ELMENDORF AFB (PAED)

TACAN Chan	EDF 81	APCH CRS 062°	Rwy Ldg TDZE 175 Arprt Elev 213
------------	--------	---------------	------------------------------------

[USAF]

▼ \* When ALS inop, increase CAT AB RVR to 55, vis to 1 mile, CAT CDE vis to 1 1/2 miles.  
 \*\* Circling not authorized south of Rwy 6-24.

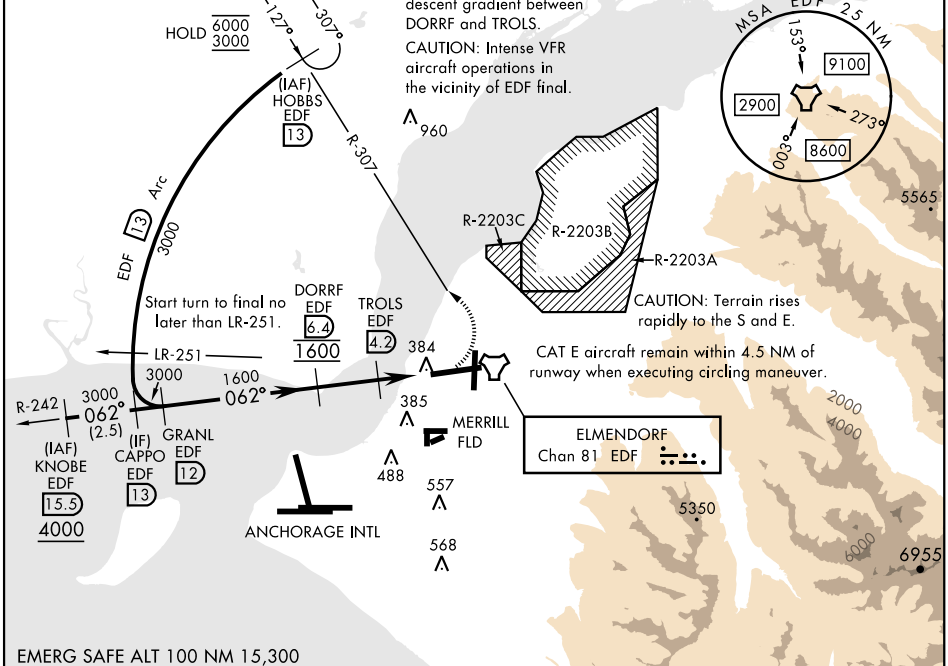


MISSED APPROACH: Climbing left turn to 3000 via EDF R-307 to HOBBS and hold.

ATIS ★ 124.3 273.5	ANCHORAGE APP CON 118.6 290.5 123.8 259.3 (N) (S)	TOWER 127.2 352.05	GND CON 121.8 275.8	CLNC DEL 128.8 306.925	PAR
-----------------------	---	-----------------------	------------------------	---------------------------	-----

\*\*\* Circling not authorized SW of Rwy 6 and 34.

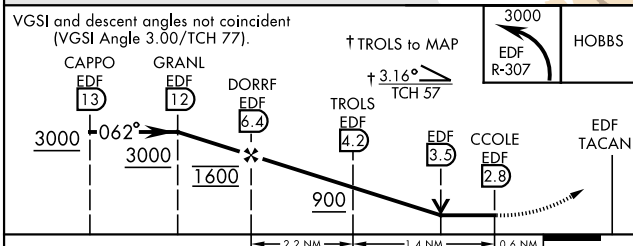
CAUTION: Descent gradient after TROLS DME fix is greater than descent gradient between DORRF and TROLS.  
 CAUTION: Intense VFR aircraft operations in the vicinity of EDF final.  
 Missed Approach requires use of RNAV or ATC radar monitoring.



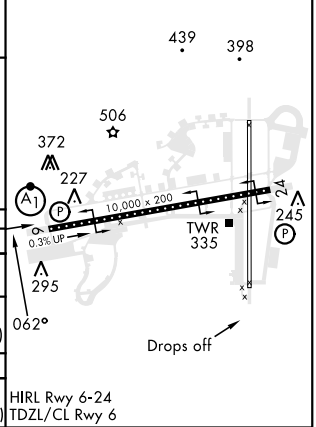
AK, 05 SEP 2024 to 31 OCT 2024

AK, 05 SEP 2024 to 31 OCT 2024

EMERG SAFE ALT 100 NM 15,300



ELEV	213	TDZE	175
------	-----	------	-----



CATEGORY	A	B	C	D	E
S-6 *	640/24	465 (500-1/2)	640/50	465	(500-1)
** CIRCLING	840-1	627 (700-1)	840-1 3/4 627 (700-1 3/4)	840-2 627 (700-2)	940-2 1/2 727 (800-2 1/2)
RWY 34 CIRCLING MINIMUMS					
*** CIRCLING	840-1	627 (700-1)	920-2 707 (800-2)	1020-2 1/2 807 (900-2 1/2)	1480-3 1267 (1300-3)

HIRL Rwy 6-24  
TDZL/CL Rwy 6

# TACAN RWY 6