

ILS Z or LOC/DME Z RWY 6

LOC I-EDF 110.3	APCH CRS 062°	Rwy Idg 10,000
		TDZE 175
		Arprt Elev 213

[USAF]

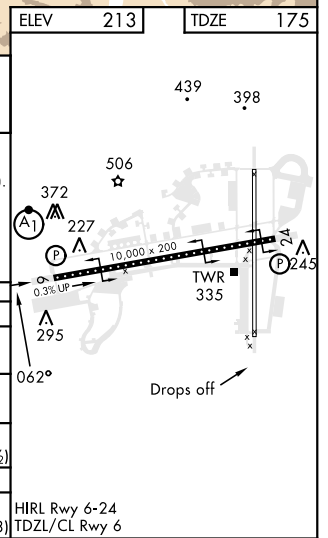
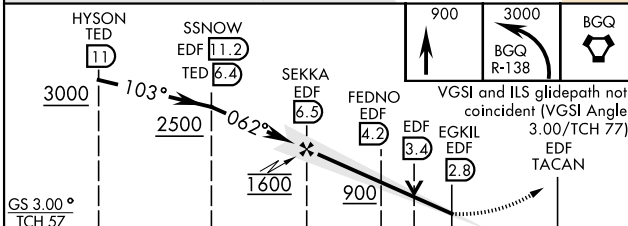
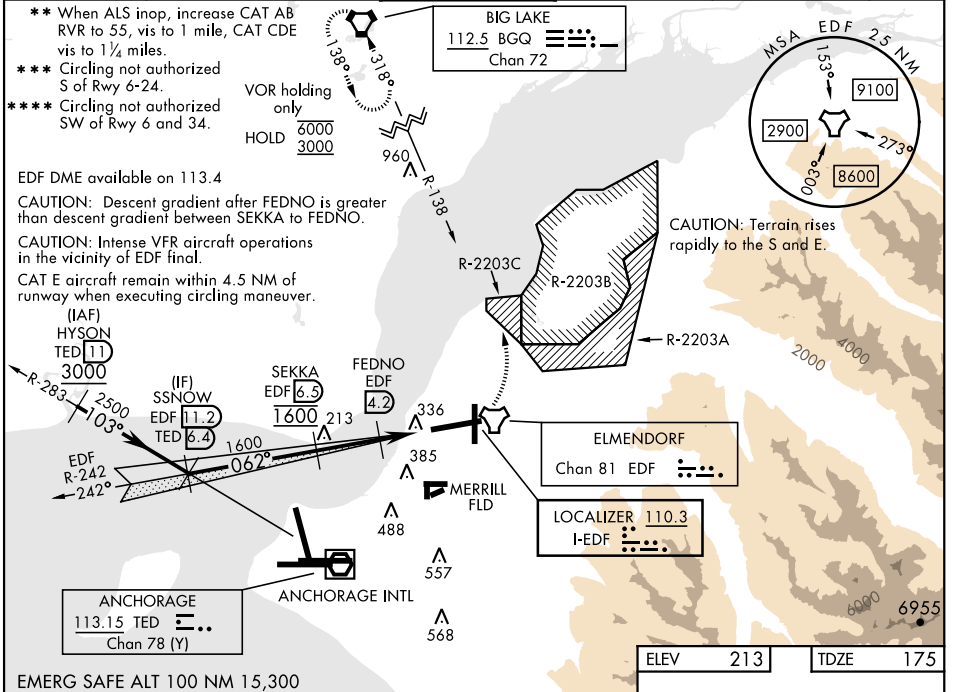
ELMENDORF AFB (PAED)

▼ *When TDZ/CL lights inop increase RVR to 24. When ALS inop, increase RVR to 40, vis to ¼ mile.

ALS F-1
A1

MISSED APPROACH: Climb to 900, then climbing left turn to 3000 and intercept BGQ R-138 to BGQ and hold.

ATIS ★ 124.3 273.5	ANCHORAGE APP CON 118.6 290.5 (N) 123.8 259.3 (S)	TOWER 127.2 352.05	GND CON 121.8 275.8	CLNC DEL 128.8 306.925	PAR
------------------------------	---	------------------------------	-------------------------------	----------------------------------	-----



CATEGORY	A	B	C	D	E
S-ILS 6 *	375/18		200	(200-½)	
S-LOC 6 **	600/24 425 (400-½)		600/40	425	(400-¾)
CIRCLING ***	840-1	627 (700-1)	840-1¾ 627 (700-1¾)	840-2 627 (700-2)	940-2½ 727 (800-2½)
RWY 34 CIRCLING MINIMUMS					
CIRCLING ****	840-1	627 (700-1)	920-2 707 (800-2)	1020-2½ 807 (900-2½)	1480-3 1267 (1300-3)

HIRL Rwy 6-24
TDZL/CL Rwy 6

ILS Z or LOC/DME Z RWY 6

AK, 31 OCT 2024 to 26 DEC 2024

AK, 31 OCT 2024 to 26 DEC 2024