

LOC/DME I-CMX <b>110.3</b> Chan <b>40</b>	APP CRS <b>133°</b>	Rwy Idg <b>6501</b> TDZE <b>1095</b> Apt Elev <b>1095</b>
---	------------------------	---

# LOC BC RWY 14

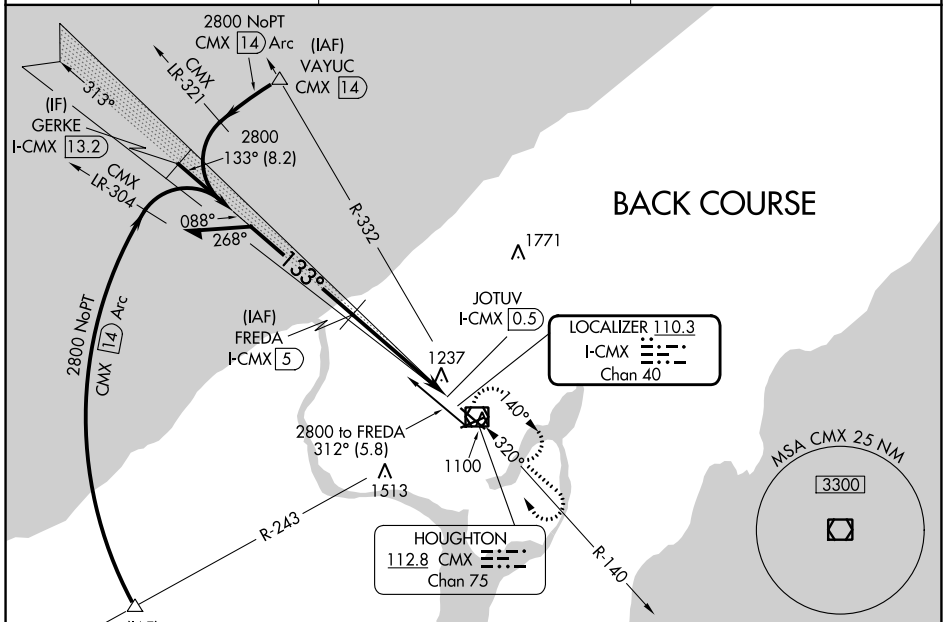
HOUGHTON COUNTY MEML (CMX)

DME required.

**⚠** Rwy 14 helicopter visibility reduction below ¼ SM NA.  
Activate MIRLs Rwy 7-25 - CTAF.

MISSED APPROACH: Climb to 3100 then right turn direct CMX VOR/DME and hold.

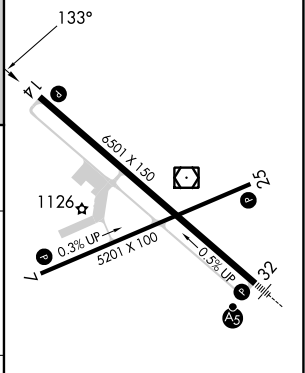
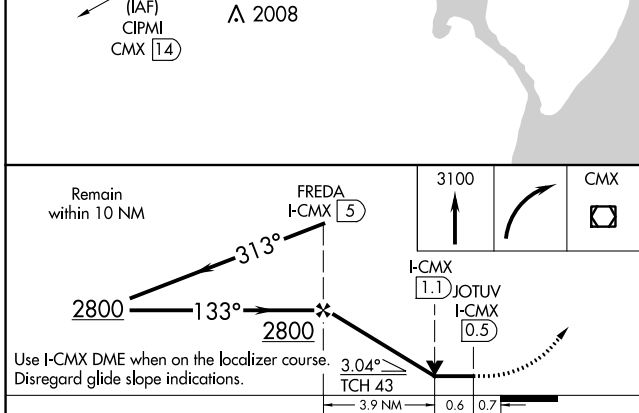
ASOS <b>125.675</b>	MINNEAPOLIS CENTER <b>133.55 379.1</b>	UNICOM <b>122.7 (CTAF) 0</b>
------------------------	---	---------------------------------



EC-1, 05 SEP 2024 to 03 OCT 2024

EC-1, 05 SEP 2024 to 03 OCT 2024

ELEV 1095	<b>D</b> TDZE 1095
-----------	--------------------



CATEGORY	A	B	C	D
S- LOC 14	1540-1	445 (500-1)	1540-1½ 445 (500-1½)	1540-1½ 445 (500-1½)
<b>C</b> CIRCLING	1620-1 525 (600-1)	1660-1 565 (600-1)	1700-1¾ 605 (700-1¾)	1820-2¼ 725 (800-2¼)

MIRL Rwy 7-25 **0**  
REIL Rwys 7, 14 and 25 **0**  
HIRL Rwy 14-32 **0**