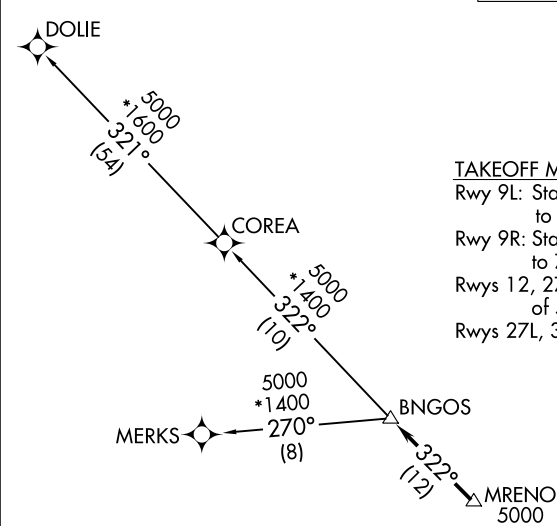
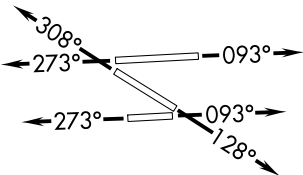
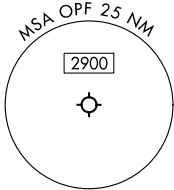


RNAV-1 DME/DME/IRU or GPS.	TOP ALTITUDE: ASSIGNED BY ATC	MIAMI DEP CON
RADAR required.		119.45 290.325 ATIS 125.9 CLNC DEL 119.2 GND CON 120.025 OPA LOCKA TOWER* 134.675 (CTAF)



TAKEOFF MINIMUMS
Rwy 9L: Standard with minimum climb of 500'/NM to 1000.
Rwy 9R: Standard with minimum climb of 500'/NM to 700.
Rwys 12, 27R: Standard with minimum climb of 500'/NM to 600.
Rwys 27L, 30: Standard.



NOTE: Jet aircraft only.
NOTE: Accelerate to 250K until leaving 10000, if unable, advise ATC.
NOTE: MERKS Transition ATC assigned only except aircraft landing: MKY, RSW, APF, PGD and FMY.

NOTE: Chart not to scale.

DEPARTURE ROUTE DESCRIPTION
TAKEOFF RUNWAYS 9L/R: Climb on heading 093° or as assigned by ATC for RADAR vectors to cross MRENO at or above 5000, thence. . . TAKEOFF RUNWAY 12: Climb on heading 128° or as assigned by ATC for RADAR vectors to cross MRENO at or above 5000, thence. . . TAKEOFF RUNWAYS 27L/R: Climb on heading 273° or as assigned by ATC for RADAR vectors to cross MRENO at or above 5000, thence. . . TAKEOFF RUNWAY 30: Climb on heading 308° or as assigned by ATC for RADAR vectors to cross MRENO at or above 5000, thence.on track 322° to BNGOS, then on assigned transition, maintain ATC assigned altitude, expect filed altitude within 10 minutes after departure. COREA TRANSITION (BNGOS4.COREA) DOLIE TRANSITION (BNGOS4.DOLIE) MERKS TRANSITION (BNGOS4.MERKS)