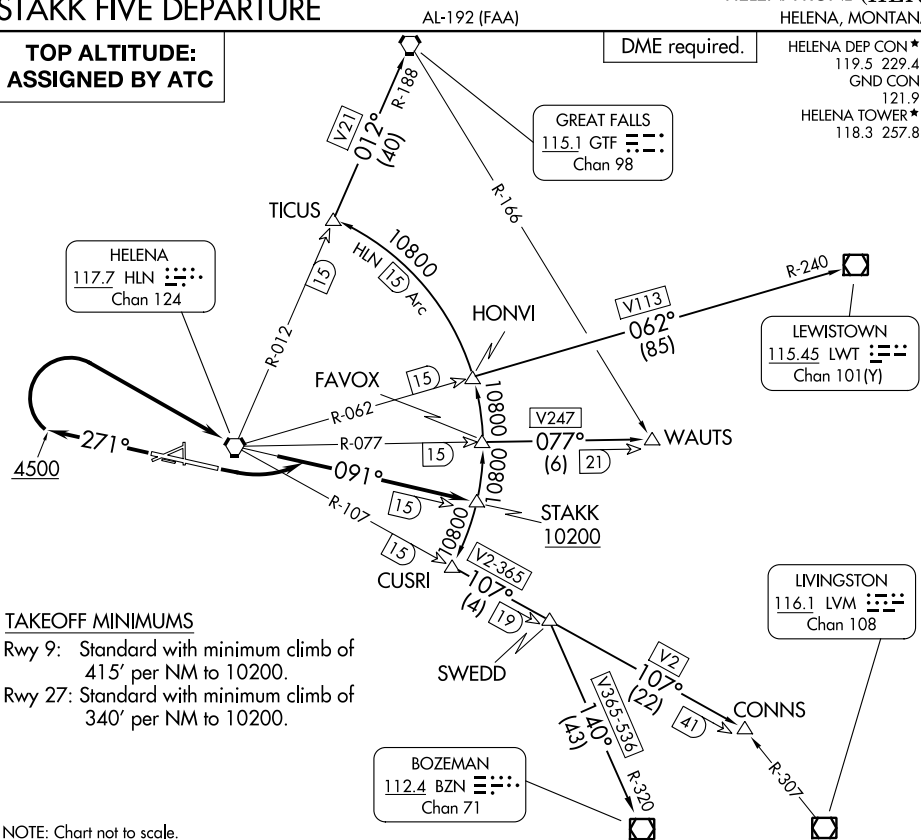


## STAKK FIVE DEPARTURE

HELENA DEP CON★	119.5	229.4
GND CON	121.9	
HELENA TOWER★	118.3	257.8

**TOP ALTITUDE:  
ASSIGNED BY ATC**

DME required.



## TAKEOFF MINIMUMS

Rwy 9: Standard with minimum climb of 415' per NM to 10200.  
Rwy 27: Standard with minimum climb of 340' per NM to 10200.

NOTE: Chart not to scale.

## DEPARTURE ROUTE DESCRIPTION

TAKEOFF RUNWAY 9: Climbing left turn to intercept HLN R-091 to cross STAKK at or above 10200, thence. . .

TAKEOFF RUNWAY 27: Climb on heading 271° to 4500 then climbing right turn direct HLN VORTAC. Continue climb on HLN R-091 to cross STAKK at or above 10200, thence. . . .on transition. Maintain assigned altitude.

BOZEMAN TRANSITION (STAKK5.BZN): From over STAKK on 15 DME Arc to CUSRI INT, then on HLN R-107 to SWEDD INT, then on BZN R-320 to BZN VOR/DME.

CONNS TRANSITION (STAKK5.CONNS): From over STAKK on 15 DME Arc to CUSRI INT, then on HLN R-107 to SWEDD INT, then on HLN R-107 to CONNS INT.

GREAT FALLS TRANSITION (STAKK5.GTF): From over STAKK on 15 DME Arc to TICUS, then on HLN R-012 and GTF R-188 to GTF VORTAC.

LEWISTOWN TRANSITION (STAKK5.LWT): From over STAKK on 15 DME Arc to HONVI, then on HLN R-062 and LWT R-240 to LWT VOR/DME.

WAUTS TRANSITION (STAKK5.WAUTS): From over STAKK on 15 DME Arc to FAVOX, then on HLN R-077 to WAUTS INT.

STAKK FIVE DEPARTURE  
(STAKK5.STAKK) 23FEB23

HELENA, MONTANA  
HELENA RGNL (HLN)

NW-1, 16 MAY 2024 to 13 JUN 2024